



SHIRE OF KOJONUP

Trails Master Plan





## Contents

Welcome .....	3
About the Shire of Kojonup .....	5
Introduction .....	6
1.0 Areas and Sites.....	8
1.1 Existing Trails.....	8
1.1.1 Myrtle Benn Flora and Fauna Reserve .....	8
1.1.2 Farrar Reserve .....	9
1.1.3 Historical Town Walk .....	10
1.1.4 Kojonup Self Drive Wildflower Tour .....	11
1.2 Proposed New Trails .....	12
1.2.1 Myrtle Benn Extension.....	12
1.2.2 Farrar Reserve Town Link Extension .....	13
1.2.3 Great Southern Treasures Recreation Circuit (GSTRC) - Bobtail Trail.....	13
1.2.4 Grain Rail Trail Network.....	14
1.2.5 Trail Hub.....	14
2.0 Key Objectives.....	15
2.1 Access.....	15
2.2 Connections .....	15
2.3 Awareness.....	15
2.4 Involvement .....	15
3.0 Key Issues.....	16
4.0 Trail Classifications.....	17
4.1 Walking Trail Classification .....	17
4.2 Mountain Bike Trail Classification.....	18
5.0 Visitor Experiences.....	19
6.0 Recommendations .....	21
6.1 Trail Upgrade Priority.....	21
6.2 Trail Upgrade Tasks.....	21
7.0 Implementation Planning .....	23
8.0 Maintenance and Management .....	29
Further Information .....	29

## Welcome

This Trails Master Plan has been prepared to provide guidance on the improvement, maintenance and construction of existing and future trails throughout the Shire of Kojonup (Shire). It is a living document, and as such will be reviewed from time to time to ensure it remains relevant, and that the scope continues to meet the needs of trail users.

**This plan recommends the maintenance and upgrading of four (4) existing trails, the creation of four (4) new trail experiences and the construction of a centralised trail hub in the town site.** Trails are a rapidly growing recreational pursuit and tourism attraction, and Kojonup is ideally located to benefit from significant trail investment.

**Trails covered in this plan are as follows:**

Existing Trails	New Trails
Historical Town Walk	Farrar Reserve Town Link
Farrar Reserve	Myrtle Benn Reserve Extension
Myrtle Benn Flora and Fauna Reserve	Grain Rail Trail Circuit
Self-Drive Wildflower Tours	Bobtail Trail
Centralised Trail Hub	

**Progression and upgrades to each trail will reference back to the following points, ensuring that the Shire continues to focus on the priority corporate actions and projects detailed in SMART Implementation 2020-2024:**

1. Ensure all land tenure of sites and trails is known, and where applicable, responsibilities are clearly defined with regards to maintenance and upgrades
2. Focus on improving signage, way marking and facilities and look at ways of incorporating Indigenous dual naming
3. Create maintenance logs and check systems to ensure the Shire is up to date with requirements
4. Increase links between sites, trails and the town site, with linkages centralised around the Kodja Place Precinct
5. Continue and expand on the existing relationships with local community groups
6. Prioritise new trails based on need, budget, required planning and land ownership
7. Investigate all funding sources, and create individual staged plans for new trails in preparation for future grants
8. Consult with local community groups for information gathering and assistance during the planning stages of any new trail

The Shire has a range of trail opportunities, both within the townsite and in surrounding areas. The Great Southern Regional Trails Masterplan (GSRTMP), a document created with input from shires located in the Great Southern as an overarching plan for trails in the Great Southern region, has identified opportunities within Kojonup to improve and expand on the current trail options available. References to the GSRTMP will be found throughout this document, utilising the extensive research that was done in compiling the GSRTMP.

As detailed in Smart Implementation 2024+, Kojonup's Corporate Business Plan that translates the Community and Council's objectives and aspirations from the adopted 'SMART Possibilities 2017 – 2027' into operations that are within the capacity of the Shire's resources, the Shire has identified the following as key priorities and actions for the period 2020 to 2024:

*Community Outcome 1.1 – Have maximised our 'One Community' program through specific events, celebration of built form and enhancement of our environment*

*1.1.2 Celebrate the significance of cultural, social and built heritage including local indigenous and multicultural groups; and*

*1.1.22 Explore opportunities to align horse, cycle and walking trails; and  
Undertake a cycle plan for the townsite to connect to heritage/cultural and sporting/recreation infrastructure*

*Community Outcome 1.2 – Be a happy, healthy, connected and inclusive community driven by the provision of high standard sport, recreation and open space facilities and programs*

*1.2.1 Develop and adopt a Trails Master Plan to develop and activate a trail network and reserve walks in conjunction with State-wide recreation partners*

Rick Mitchell-Collins  
Chief Executive Officer

## About the Shire of Kojonup

The Shire of Kojonup covers an area of 2,937 sq km in the Great Southern Region of Western Australia. The Shire includes 900km of unsealed roads and 344 km of sealed roads.

Nestling in the rural heartland of the Great Southern region, historic Kojonup is more than just a gateway to the beautiful South. Settled over 150 years ago, Kojonup is a bustling rural town still bearing all the trademarks of a traditional country settlement, with its historic buildings and friendly, safe atmosphere.

Located on Highway 30, the direct route that runs south east from Perth to the historic port of Albany, Kojonup is a junction town at the very heart of the rich southern corner of Western Australia. Some 256km from Perth and 160km from Albany, Kojonup straddles the Albany Highway and is easily accessible by road. There is also an Electric Vehicle charging point located at The Kodja Place.

Being a mid point between the cities of Perth and Albany, Kojonup is in a prime location to capture travellers along that route for short stops or longer stays, enabling travellers to base themselves in Kojonup whilst enjoying all the trails the Great Southern has to offer. The landscapes, history and easily traversed terrain offer many opportunities for walking, cycling and knowledge gathering.

There are various accommodation options from the self contained RV Overnight stop and caravan park through to B&B's and motel style rooms, which can be booked via [www.kojonupvisitorscentre.com.au](http://www.kojonupvisitorscentre.com.au)

The Kodja Place Visitor and Interpretive Centre tells the inside story of Australian country life in Kojonup. Voices, photographs, art and objects from Kojonup's Noongar-Aboriginal and settler cultures are woven together in imaginative and richly-layered interpretation. The Kodja Place offers a wonderful starting point for exploring the Kojonup shire.



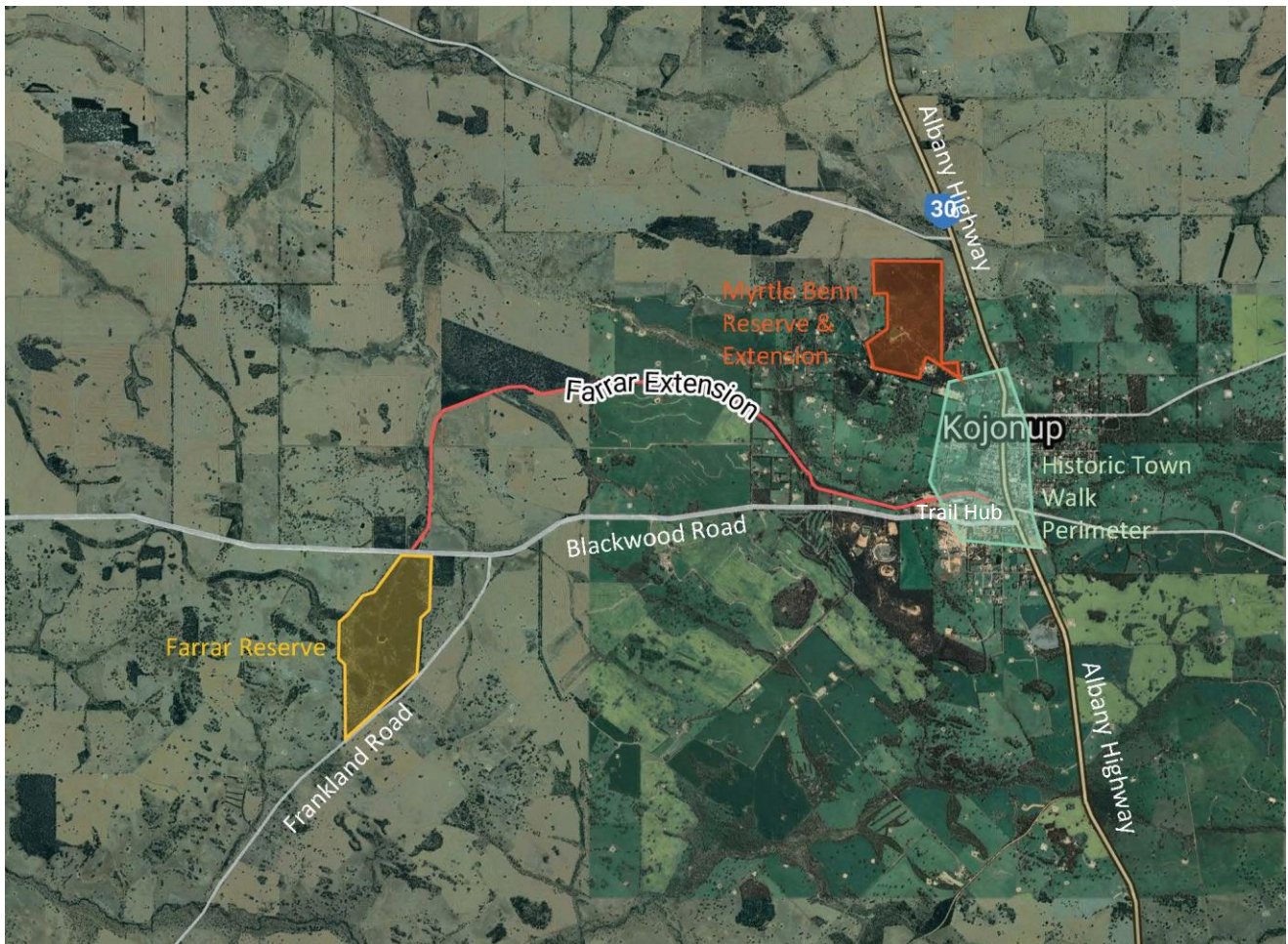


## Introduction

This plan comprises of eight (8) sections, each providing details and guidance, as follows:

1. Areas and Sites
2. Key Objectives
3. Key Issues
4. Trail Classifications
5. Visitor Experience
6. Recommendations
7. Implementation Planning
8. Maintenance and Management

As well as encouraging visitors to experience our trails, it is important to note the positive impact outdoor recreation opportunities have on local residents. From residents wishing to keep in touch with local history to others eager to embrace a fast paced outdoor adventure, trails in Kojonup offer experiences for all abilities and levels of fitness.



The recommendations listed in detail in section '6.0 Recommendations' are summarised here for ease of access in the Trails Master Plan

**Existing Trails** - Historical Town Walk Trail, Myrtle Benn Flora and Fauna Reserve, Farrar Reserve and Kojonup Self Drive Wildflower Tour

**Planned Trails** - Myrtle Benn Flora and Fauna Reserve Extension, Farrar Town Link, Grain Rail Trail, Bobtail Trail

Trails both existing and planned will require the following features as minimum standard, with works to progress this according to the Implementation Planning:

- Consistency throughout all Trails in regards to signage design and minimum information requirements
- Informative trailhead signage and consistent way finding markers
- Signage advising walking/cycling difficulty classification
- Seating and shelter areas with infographic signage
- Well maintained tracks throughout each site, in line with the difficulty classifications

Upgrades to and development of existing and planned trails have been prioritised as follows, however these can change depending on funding availability:

1. Historical Town Walk
2. Myrtle Benn Flora and Fauna Reserve and Extension
3. Farrar Reserve and Town Link Extension
4. Bobtail Trail - Great Southern Treasures Recreation Circuit
5. Grain Rail Trail Network
6. Kojonup Self Drive Wildflower Tour

The priority of each trail has been determined by the following criteria:

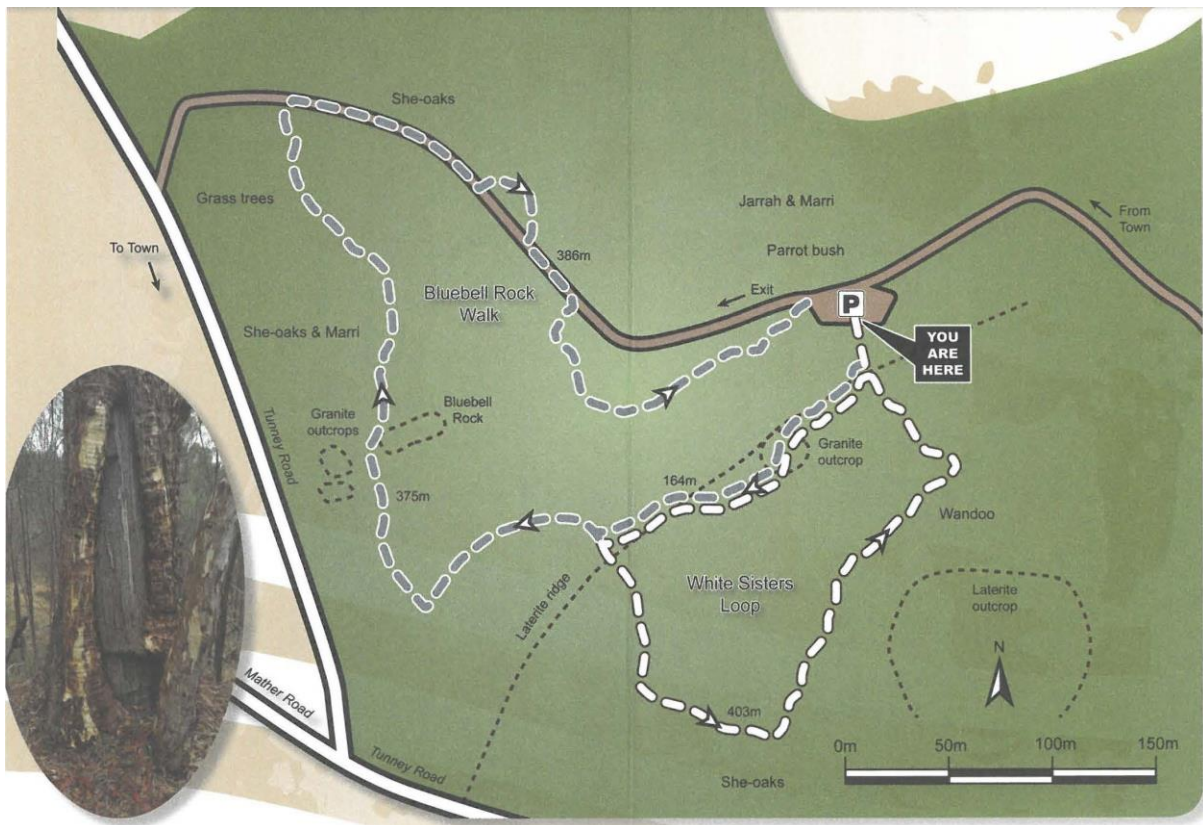
- Current and expected use – both community and visitors
- Required capital expenditure
- Land ownership/management orders
- Alignment to Shire of Kojonup Vision, Mission and Community Outcomes

## 1.0 Areas and Sites

### 1.1 Existing Trails

#### 1.1.1 Myrtle Benn Flora and Fauna Reserve

Myrtle Benn Reserve covers an area of approximately 20 hectares, 85% of which is remnant bushland. This reserve contains two separate walk trails, the White Sisters Loop (620m) and the Bluebell Rock Walk (975m). Both trails are at a Grade Two level, with some uneven surfaces. The reserve is named after Mrs Myrtle Benn, an early teacher of the Kojonup area's children who used the Reserve site as an outdoor classroom. There are designated parking areas, trailhead signage at the main parking area, trail markers and some flora and fauna signs throughout the reserve. There is a brochure with map and flora/fauna notes available from the Visitors Centre.



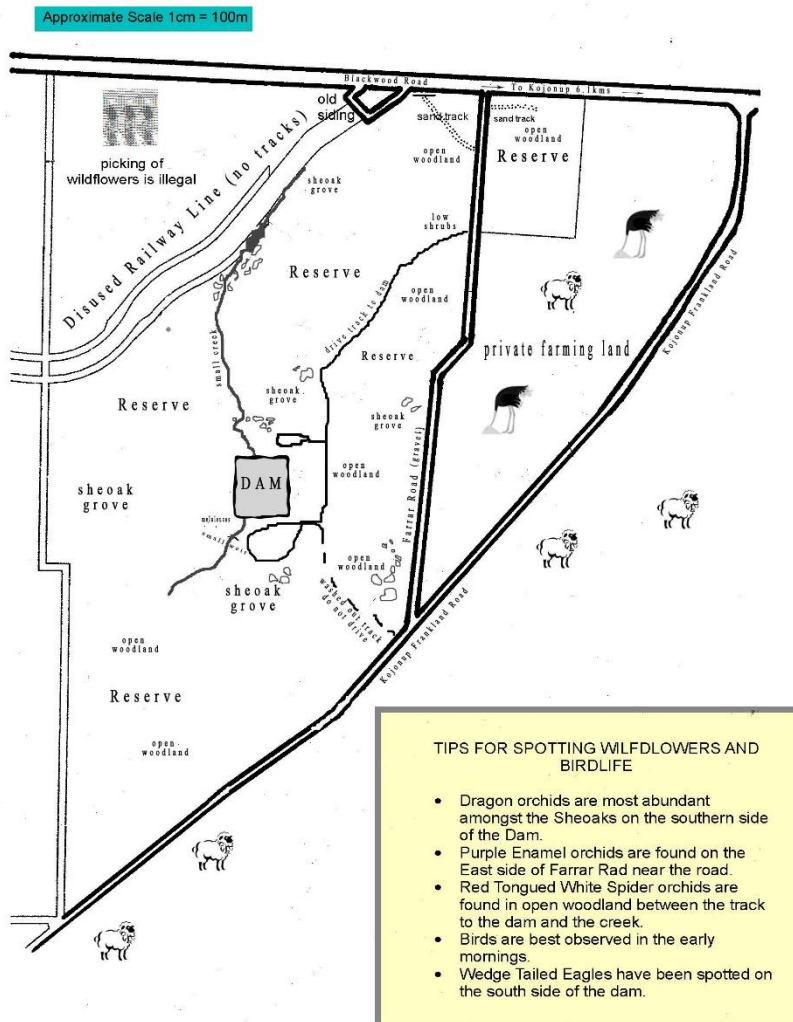


1.1.2 Farrar Reserve

Farrar Reserve covers an area of approximately 24ha, all remnant bushland except for tracks and the Farrar Dam. The dam has historical significance, being sunk by horse and cart in 1917 as a water storage facility for use by steam engines travelling from Bunbury to Katanning. The Reserve has minimal signage, no designated parking areas and no trail markers and requires upgrades to trails and tracks. There is a single page map and notes regarding the Reserve available from the Kojonup Visitors Centre.

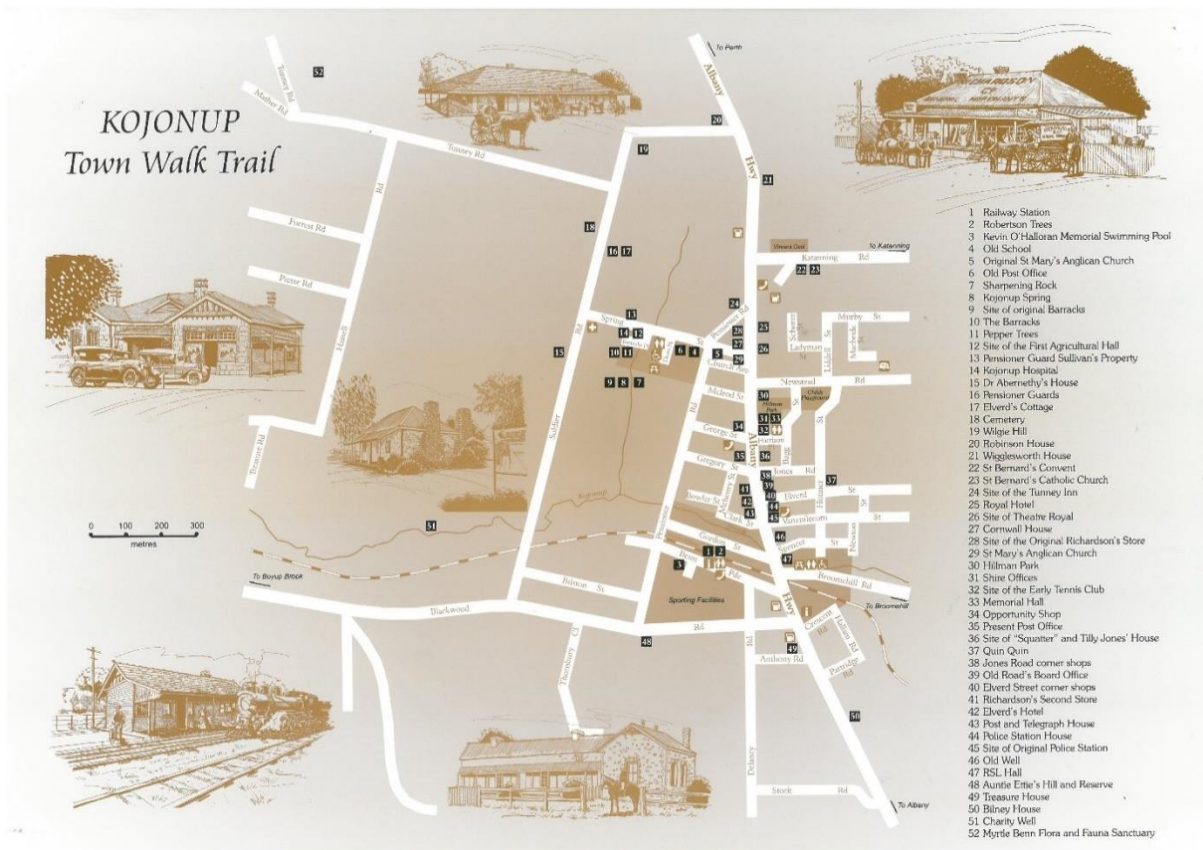
### FARRAR RESERVE AND RAILWAY DAM TRAIL MAP

Enter the reserve from Farrar Road - Park to the side of the tracks to allow other vehicles to pass, be aware of foot traffic along the drive track to the dam and Farrar road



1.1.3 Historical Town Walk

Kojonup’s Historical Town Walk covers 52 sites of historical significance within the town boundaries. The existing individual site notes contained within the 16 page brochure offer good information, however the signage at each site is weather worn and in some cases illegible. Significant extra information on many sites is available via the Kojonup Historical Society, locally published books and online.



1.1.4 Kojonup Self Drive Wildflower Tour

This existing set of four (4) self-driving tours are best viewed during the Wildflower season (September to November) and range from 59km return to 105km return. The existing brochure combines a detailed map and explanatory notes and photos advising of the various native plants and animals specific to each area. This Tour would benefit from wider publicity, way marking and inclusion in the GSTRC.





## 1.2 Proposed New Trails

### 1.2.1 Myrtle Benn Extension

With reserves to the north of Myrtle Benn having their purpose formally recognised as recreational, the opportunities to extend the trail pathways from the existing Myrtle Benn Reserve site into the new reserves will be explored. There are existing pathways suitable for cycling and hiking, and with some improvements they could be used by off road vehicles for the sole purpose of transport for limited ability visitors to areas of high significance. There are extensive parcels of undisturbed natural bush, containing species of native orchids not usually found in the existing Myrtle Benn Reserve. Signage and way marking would be required to ensure appropriate use of the space. Trails in this space will be variable in length, from 2km up to 8km.



### 1.2.2 Farrar Reserve Town Link Extension

The extension of the link between Farrar Reserve and the Railway Heritage Precinct on Benn Parade would see users able to complete a cycle or walk from the Kojonup town site, along the disused railway corridor to Farrar Reserve.



### 1.2.3 Great Southern Treasures Recreation Circuit (GSTRC) - Bobtail Trail

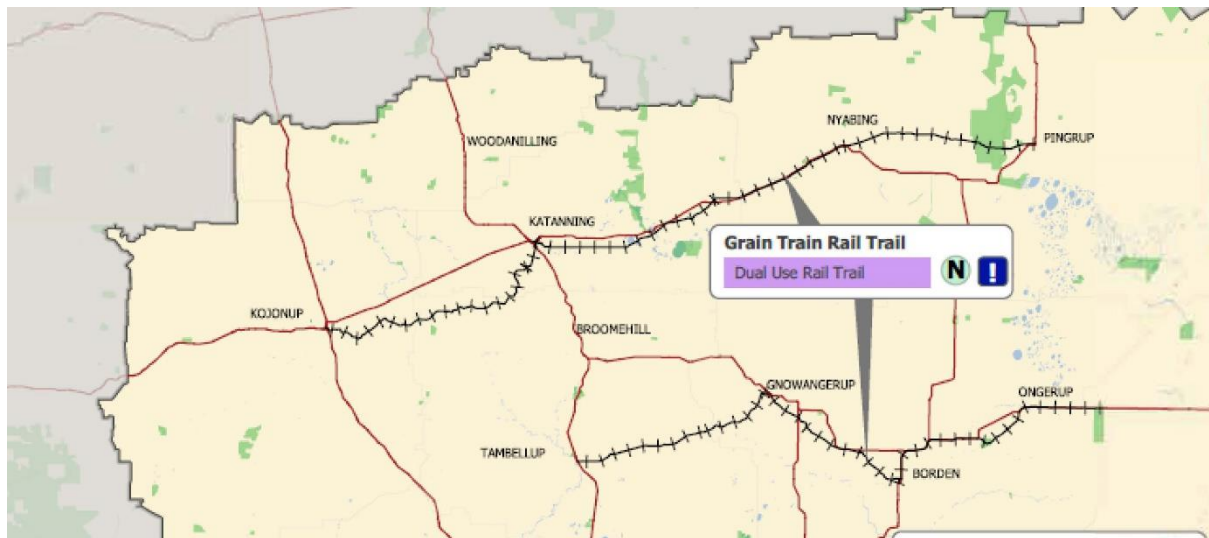
This trail circuit is an extension of existing and new trails located in shires participating in the Great Southern Treasures program. Ongoing collaborative works between all stakeholders are required to ensure a level of cohesiveness in regards to branding, signage and publicity.





### 1.2.4 Grain Rail Trail Network

This proposed 157km trail network would see Kojonup linked to Katanning, Nyabing and Pingrup via the old disused railway corridor. It would offer various options for cycling and hiking, with proposed stopping points available for overnight stays. Work is still required to confirm land tenure requirements on this trail. The establishment of the portion of the Grain Rail Trail Network in the Shire of Kojonup will enable linkages with other trails throughout the Great Southern region, especially the existing Great Southern Railway line.



### 1.2.5 Trail Hub

The construction of a designated centralised Trail Hub, located within the Kojonup town site, for trail users to access information will be an important addition to the existing trail offerings. The trail hub will act as a start / end terminus for the following trails:

- Historical Town Walk
- Farrar Reserve Town Link
- Myrtle Benn Reserve and Extension
- Grain Rail Trail Circuit
- Self-Drive Wildflower Tours; and
- Bobtail Trail

Currently, trail information is provided by way of multiple paper brochures, and is accessible via The Kodja Place Visitor Information Centre. This limits access to trail information to opening hours, and results in reduced visitor experiences of Trails. By having information available at a centralised Trail Hub, this barrier is removed.

A Trail Hub will include shelter, extensive large format infographics and seating.



## 2.0 Key Objectives

The key objectives of this plan are to provide general directions for the progression of Trails within the Shire.

The improvement of **access, connections, awareness and involvement** have been identified as the overarching objectives for the Shire in achieving an improved network of trails.

### 2.1 Access

The Shire currently has various existing trails for walking, cycling and driving. All walking, cycling and driving trails require improvements to signage and way marking which is a high priority, with short and medium term projects to be planned. Dual use trails (encouraging use for both walkers and cyclists) require identification. Access to trails by those with limited abilities is identified as a priority, and will be identified using the walking track grading system.

### 2.2 Connections

Increased connection between existing trails as well as planned future trails has the potential to improve the utilisation of multiple trails in a single visit. This will encourage longer term stays for visitors to the Shire, and aligns with the strategies of the GSRTMP and the Great Southern Treasures Recreation Circuit (GSTRC). By continuing our relationship with Great Southern Treasures we are able to participate in cross promotional activities connecting Kojonup trails with others in the Great Southern. Combining and increasing information covering all trails, through digital and paper based options will be a significant step in increasing connections between trails in Kojonup and throughout the Great Southern.

### 2.3 Awareness

Awareness focuses on the culture, history and environment within the Shire and of the trails themselves. These are essentially two separate objectives, both equally important. The existing walking trails go some way to providing access to local culture, history and our natural landscapes, but require further consultation prior to upgrades. Consideration should be given to local Indigenous cultural protocol while walking on country, and utilising Aboriginal or dual naming (Landgate publication 'Aboriginal and Dual Naming – A guideline for naming Western Australian geographic features and places 2020'). The Kodja Place is a shining example of the integration of indigenous and non-indigenous culture and history. The stories told in Kodja Place have created an immersive experience for visitors and locals alike, and this integration will be mirrored in existing and future trails in Kojonup. Improvements to signage and way marking will increase awareness of trails themselves.

### 2.4 Involvement

The involvement of local community members and groups, regional stakeholders and regional and national peak bodies should be considered in all aspects of trails planning. This will include ensuring trail development plans consider sustainable trail design principles.

### 3.0 Key Issues

During the development of the GSRTMP, various key issues were discovered, which have been reinforced through further exploration of such by the Shire.

- Improvement required of signage and way marking on all existing Trails.
- Installation of signage and way marking on existing Trails that are currently unmarked
- Lack of a marketing strategy for Kojonup Trails
- Lack of linkages between Trail experiences throughout the region

The improvement and/or installation of signage and way marking for existing Trails has been identified as a high priority for the Shire. This will initially involve collaboration with local community groups to access information. Consideration needs to be given to the findings of the Great Southern Regional Trails Working Group (GSRTWG) in regards to consistent marketing and signage throughout the Region when planning these improvements.

Addressing these key issues forms the basis of the recommendations made in this plan.

## 4.0 Trail Classifications

### 4.1 Walking Trail Classification

The grading system assesses a walk's difficulty based on several criteria, including: experience required, steps, gradient, path quality and signage. The walk's final grade is based on the most difficult of these 5 criteria, rather than an average, so some walks will have criteria that meet an easier grade.



**Grade 1** - No bushwalking experience required. Flat even surface with no steps or steep sections. Suitable for wheelchair users who have someone to assist them. Walks no greater than 5km.



**Grade 2** - No bushwalking experience required. The track is hardened or compacted surface and may have a gentle hill section or sections and occasional steps. Walks no greater than 10km.



**Grade 3** - Suitable for most ages and fitness levels. Some bushwalking experience recommended. Tracks may have short steep hill sections a rough surface and many steps. Walks up to 20km.



**Grade 4** - Bushwalking experience recommended. Tracks may be long, rough and very steep. Directional signage may be limited.



**Grade 5** - Very experienced bushwalkers with specialised skills, including navigation and emergency first aid. Tracks are likely to be very rough, very steep and unmarked. Walks may be more than 20km.

Trail	Grade 1	Grade 2	Grade 3	Grade 4	Grade 5
Farrar Reserve			✓		
Farrar Reserve Town Link			✓		
Grain Rail Trail Network				✓	
Great Southern Treasures Recreation Circuit (Bobtail Trail)	✓	✓	✓	✓	✓
Historical Town Walk		✓			
Myrtle Benn Extension			✓		
Myrtle Benn Reserve			✓		
Self-Drive Wildflower Tour	N/A	N/A	N/A	N/A	N/A



## 4.2 Mountain Bike Trail Classification

Mountain Bike Trails are classified according to difficulty from Very Easy (white circle logo) through to Extremely Difficult (double black diamond logo). The following information provides more detail on the grading system:



**Very easy** - Wide trail, gentle gradient, no obstacles. For beginner cyclists with basic bike skills.



**Easy** - Wide trail, gentle gradient, some obstacles. For beginner mountain bikers with basic mountain-bike skills.



**Intermediate** - Moderate gradient, obstacles and some steep sections. For skilled mountain bikers.



**Difficult** - For experienced mountain bikers. Challenging trail. Large, unavoidable obstacles and features. Long steep climbs or descents and loose surfaces.



**Extreme** - For highly experienced mountain bikers. All sections extremely challenging. Large, unavoidable obstacles and severe features

Trail	V.Easy	Easy	Inter	Diff	Extreme
Farrar Reserve			✓		
Farrar Reserve Town Link			✓		
Grain Rail Trail Network				✓	
Great Southern Treasures Recreation Circuit (Bobtail Trail)	✓	✓	✓	✓	✓
Historical Town Walk		✓			
Myrtle Benn Extension			✓		
Myrtle Benn Reserve			✓		
Self-Drive Wildflower Tour	N/A	N/A	N/A	N/A	N/A

## 5.0 Visitor Experiences

This section illustrates and describes the desired experience for each trail.

- Landscape based – emphasise and enhance areas which create a sense of: open space; isolation and remoteness; exploration and discovery; interaction with the landscape through activities; viewing points; natural, cultural and heritage stories.
- Recreation based – experiences that have the potential to increase participation, visitors and stewardship such as: dog on lead areas; social gathering points (BBQ's, shelters, and tables); nature based sports; wildlife viewing areas; cultural activities.
- Heritage based – experiences to increase the knowledge and awareness of the Kojonup story with the ability to incorporate existing story lines.

Some trail sites fall into more than one category. The below table indicates the experience category of sites, with ticks indicating the suggested importance of each category.

Trail	Heritage	Landscape	Recreation
Farrar Reserve	✓✓	✓✓✓	
Farrar Reserve Town Link	✓✓✓	✓✓	✓
Grain Rail Trail Network	✓	✓✓	✓✓✓
Great Southern Treasures Recreation Circuit (Bobtail Trail)	✓✓✓	✓✓✓	✓✓✓
Historical Town Walk	✓✓✓		
Myrtle Benn Extension	✓	✓✓✓	✓✓
Myrtle Benn Reserve	✓✓	✓✓✓	
Self-Drive Wildflower Tour		✓✓✓	

The majority of trail experiences in Kojonup are landscape based, with the wildflower season a prime focus for tourists and locals. Further investigations could be made into increasing the offerings at sites where use has previously been limited to the wildflower season. This would open up opportunities for recreation based businesses to promote out of season activities. For example, the addition of shelters and water stations would encourage use by cyclers; listings of native bird species found at a site would encourage visits from twitchers; installation of more detailed historical information at Farrar Reserve and the Farrar Town Link would encourage visits from railway enthusiasts.

Heritage based experiences in Kojonup require upgrading by way of interpretation, maps, signage and available information. This has been identified as the highest priority in this plan, with works to re-establish signage and reinvigorate the Town Historical Walk beginning in 2021.

Kojonup has minimal sites that are solely recreation based experiences, with significant works required in the planning and implementation of trail networks to cover this. Walking, cycling and equine offerings should be considered within the planning stages.

Walking trails offer a lower cost option in the short term, with less structural requirements than formally constructed cycle trails. Existing and planned walking trails within Kojonup fall into the following Grades:

Grade 1	Grade 2	Grade 3	Grade 4
	Myrtle Benn Flora and Fauna Reserve	Farrar Reserve	Grain Rail Trail Network
	Kojonup Historical Town Walk	Farrar Reserve Town Link	
		Myrtle Benn Extension	

With improvements to signage and way marking, there is the potential for the Kojonup Historical Town Walk to be reclassified as a Grade One walking trail. Newly planned trails (Farrar Town Link Extension and Myrtle Benn Extension) would both fall into Grade Three, given the unevenness of the terrain and distances covered. Given the distances between stopping points and minimal way marking, the Grain Rail Trail Network would be classed as Grade Four.



## 6.0 Recommendations

### 6.1 Trail Upgrade Priority

Progression and upgrades to each trail will reference back to the following points, ensuring that the Shire continues to focus on the priority corporate actions and projects detailed in SMART Implementation 2020-2024

1. Ensure all land tenure of sites and trails is known, and where applicable, responsibilities are clearly defined with regards to maintenance and upgrades
2. Focus on improving signage, way marking and facilities and look at ways of incorporating Indigenous dual naming
3. Create maintenance logs and check systems to ensure the Shire is up to date with requirements
4. Increase links between sites, trails and the town site, with linkages centralised around the Kodja Place Precinct
5. Continue and expand on the existing relationships with local community groups
6. Prioritise new trails based on need, budget, required planning and land ownership
7. Investigate all funding sources, and create individual staged plans for new trails in preparation for future grants
8. Consult with local community groups for information gathering and assistance during the planning stages of any new trail

### 6.2 Trail Upgrade Tasks

The priority for trails in Kojonup is as follows: (note these priorities are subject to change depending on funding availability)

#### 1. Historical Town Walk

- 1.1. Trailhead signage with map listing all sites
- 1.2. Replacement way markers and direction signage
- 1.3. Larger infographics signage at each site including QR codes with links to more details
- 1.4. 2-3 x shelter/seating combinations
- 1.5. Links combining 3 Women's Stories from The Kodja Place through to heritage sites of relevance

#### 2. Myrtle Benn Flora and Fauna Reserve and Extension

- 2.1. Trail direction signage from The Kodja Place
- 2.2. Infographic refurbishment
- 2.3. Seating/shelter x 2
- 2.4. More visible trail markers
- 2.5. Extension: way markers with historical/flora/fauna notes (min 20)
- 2.6. Extension: trailhead signage at entrance to tracks off corner of Soldier and Robinson Road, shelter
- 2.7. Extension: investigation of tracks/routes for retention
- 2.8. Extension: upgrades to existing tracks

**3. Farrar Reserve and Town Link Extension**

- 3.1. Way markers with consistent labelling (min 20 in reserve)
- 3.2. Trailhead signage with map and interpretation in first parking area
- 3.3. Trailhead signage on Blackwood Road
- 3.4. Minimum 2 x shelter/seat combinations (one at dam, one in central location)
- 3.5. Extension: way markers with historical/flora/fauna notes (min 20)
- 3.6. Extension: trailhead signage at Railway Reserve incl. map
- 3.7. Extension: minimum 2x shelter/seat combinations

**4. Great Southern Treasures Recreation Circuit (Bobtail Trail)**

- 4.1. Minimum 2x shelter/seat combinations

**5. Construction of Trails Hub**

- 5.1. Trail hub shelter, seating and large infographic representations of all Trails

**6. Grain Rail Trail Network**

- 6.1. Trailhead signage from Railway Reserve incl. maps
- 6.2. Shelters - steel frame and zincalume/colorbond
- 6.3. Fire pits - winter use only, seating
- 6.4. Huts - steel frame and zincalume/colorbond
- 6.5. Solar panels - allowing charging of devices, sensor lights

**7. Kojonup Self Drive Wildflower Tour**

- 7.1. Colour coded signage along each tour path aligned with existing map

## 7.0 Implementation Planning

The tables in this section indicate the proposed upgrades to existing trails and construction of new trails, based on identified priority.

### 1. Kojonup Heritage Trail

Location: various sites throughout the townsite of Kojonup

Classification: Walk grade 2/3 , Cycle grade Easy. Distance of 5-10km

Recommendation Ref	Project	Budget	Timeline			Limitations to start
			2022-2023	2024 - 2029	2029+	
1.2	replacement way markers and direction signage	\$10,000-\$20,000	✓			planning, liaison with Historical Society, budget
1.3	larger infographics signage at each site including QR codes with links to more details	\$10,000-\$20,000	✓			planning, liaison with Historical Society, website decision (KP or Historical Soc.), budget, IT
1.4	2-3 x shelter/seating combinations	\$20,000-\$50,000		✓		planning, liaison with Historical Society, budget
1.5	links combining 3 Women stories from KP through to heritage sites of relevance	\$10,000-\$20,000		✓		planning, liaison with Historical Society/KAC/KPAC, budget

## 2. Myrtle Benn Flora and Fauna Reserve and Extension

Location: North West corner of Kojonup townsite, with entrances of Tunney Road and Robinson Road

Classification: Walk grade 3, Cycle grade Intermediate. Distances of 2-10km

Recommendation Ref	Project	Budget	Timeline			Limitations to start
			2022-2023	2024 - 2029	2029+	
2.1	trail direction signage from KP	\$0-\$10,000	✓			budget
2.2	infographic refurbishment	\$0-\$10,000	✓			budget
2.3	seating/shelter x 2	\$20,000-\$50,000		✓		budget
2.4	more visible trail markers	\$0-\$10,000	☐	✓		budget
2.5	Extension: way markers with historical/flora/fauna notes (min 20)	\$0-\$10,000		✓		budget, information
2.6	Extension: trailhead signage at entrance to tracks off corner of Soldier and Robinson Road, shelter	\$10,000-\$20,000	☐	✓		budget, information
2.7	Extension: investigation of tracks/routes for retention	\$0-\$10,000	☐	✓		information, budget
2.8	Extension: upgrades to existing tracks	\$50,000+			✓	budget



### 3. Farrar Reserve and Town Link Extension

Location: Benn Parade Railway Reserve, through to Farrar Siding 7.5km West of Kojonup

Classification: Walk grade 3, Cycle grade Intermediate. Distances of 2-20km

Recommendation Ref	Project	Budget	Timeline			Limitations to start
			2022-2023	2024 - 2029	2029+	
3.1	way markers with consistent labelling (min 20 in reserve)	\$0-\$10,000	✓			budget, information
3.2	trailhead signage with map and interpretation in first parking area	\$10,000-\$20,000	✓			budget, information
3.3	trailhead signage on Blackwood Road	\$0-\$10,000	✓			budget
3.4	minimum 2 x shelter/seat combinations (one at dam, one in central location)	\$20,000-\$50,000		✓		budget, planning
3.5	Extension: way markers with historical/flora/fauna notes (min 20)	\$10,000-\$20,000		✓		planning, land use and ownership confirmation, budget
3.6	Extension: trailhead signage at Railway Reserve incl. map	\$10,000-\$20,000	✓			planning, land use and ownership confirmation, budget
3.7	Extension: minimum 2x shelter/seat combinations	\$10,000-\$20,000		✓		planning, land use and ownership confirmation, budget

**4. Bobtail Trail (Great Southern Treasures Recreation Circuit)**

Location: various, throughout Great Southern region

Classification: Walk grade various, Cycle grade various. Distances of 1-20km

Recommendation Ref	Project	Budget	Timeline			Limitations to start
			2022-2023	2024 - 2029	2029+	
4.1	minimum 2 x shelter/seat combinations	\$10,000-\$20,000	✓			budget, information

**5. Trails Hub**

Location: corner of Albany Highway and Gordon St

Classification: information only

Recommendation Ref	Project	Budget	Timeline			Limitations to start
			2022-2023	2024 - 2029	2029+	
5.1	Trail Hub shelter with seating, large infographic signage with representation of all Kojonup Trails	\$10,000-\$20,000	☐	✓		budget,

## 6. Grain Rail Trail Network

Location: Railway Reserve on Benn Parade, via Kodja Place, through to Broomehill/Katanning

Classification: Walk grade 4, Cycle grade Difficult. Distances of 20+km

Recommendation Ref	Project	Budget	Timeline			Limitations to start
			2022-2023	2024 - 2029	2029+	
6.1	trailhead signage from Railway Reserve incl. maps	\$10,000-\$20,000		✓		planning, land use and ownership confirmation, budget
6.2	shelters - steel frame and zincalume/colorbond	\$20,000-\$50,000			✓	planning, land use and ownership confirmation, budget
6.3	Fire pits - winter use only, including seating	\$0-\$10,000		✓		planning, land use and ownership confirmation, budget
6.4	huts - steel frame and zincalume/colorbond	\$20,000-\$50,000		✓		planning, land use and ownership confirmation, budget
6.5	solar panels - allowing charging of devices, sensor lights	\$10,000-\$20,000			✓	planning, land use and ownership confirmation, budget

### 7. Kojonup Self Drive Wildflower Tour

Location: Four (4) separate self-drive tours throughout the Shire

Classification: nil – drive only tours

Recommendation Ref	Project	Budget	Timeline			Limitations to start
			2022-2023	2024 - 2029	2029+	
7.1	colour coded signage along each tour path aligned with existing map	\$10,000-\$20,000		✓		budget



## 8.0 Maintenance and Management

As with all community facilities, maintenance needs to be adequately planned and budgeted for.

The majority of Kojonup's trail projects comprise of formed gravel or dirt pathways and roads. It needs to be noted that the maintenance of these trails will impact on their use, and as such budget allocation and maintenance plans are imperative.

Different development and management models should be considered and form part of the concept planning phase of all trail development projects. These could include:

- Public management – A government agency (e.g. The Shire or Department of Biodiversity, Conservation and Attractions) has sole management responsibility of the trail facility. Commercial and event operators may contribute financially to the management of trails
- Volunteering agreements – Multiple stakeholders share management responsibility of the trail facility. Partner could include non-government incorporated agencies, government bodies, Aboriginal Corporations, Aboriginal Ranger Programs, commercial entities, foundations or trusts, and volunteer groups.
- Private management – The development of trail networks will encourage visitation and expenditure, resulting in a tangible economic impact for the surrounding communities and the region. This may in turn provide opportunities to establish and grow businesses that complement trail activities and encourage public and private investment in future trail developments.

The Department of Biodiversity, Conservation and Attractions document "A Guide to the Trail Development Process: Part A, Stage 8 Management" provides excellent information, and this document will be referenced during the production of concise trail management plans for individual trails.

### Further Information

The Great Southern Regional Trails Master Plan can be accessed by clicking the following website link: [http://gscore.com.au/wp-content/uploads/2020/08/20200407-GSCORE-RTMP-Report-V3-lo-res\\_FINAL.pdf](http://gscore.com.au/wp-content/uploads/2020/08/20200407-GSCORE-RTMP-Report-V3-lo-res_FINAL.pdf)

The TrailsWA website can be accessed by clicking the following website link: <https://trailswa.com.au/>

To have input into this plan or to seek further information please contact:

Emily Sleight  
Sport and Recreation Officer  
Shire of Kojonup  
[sro@kojonup.wa.gov.au](mailto:sro@kojonup.wa.gov.au)  
Ph 08 9831 2400