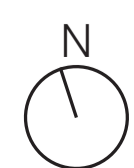
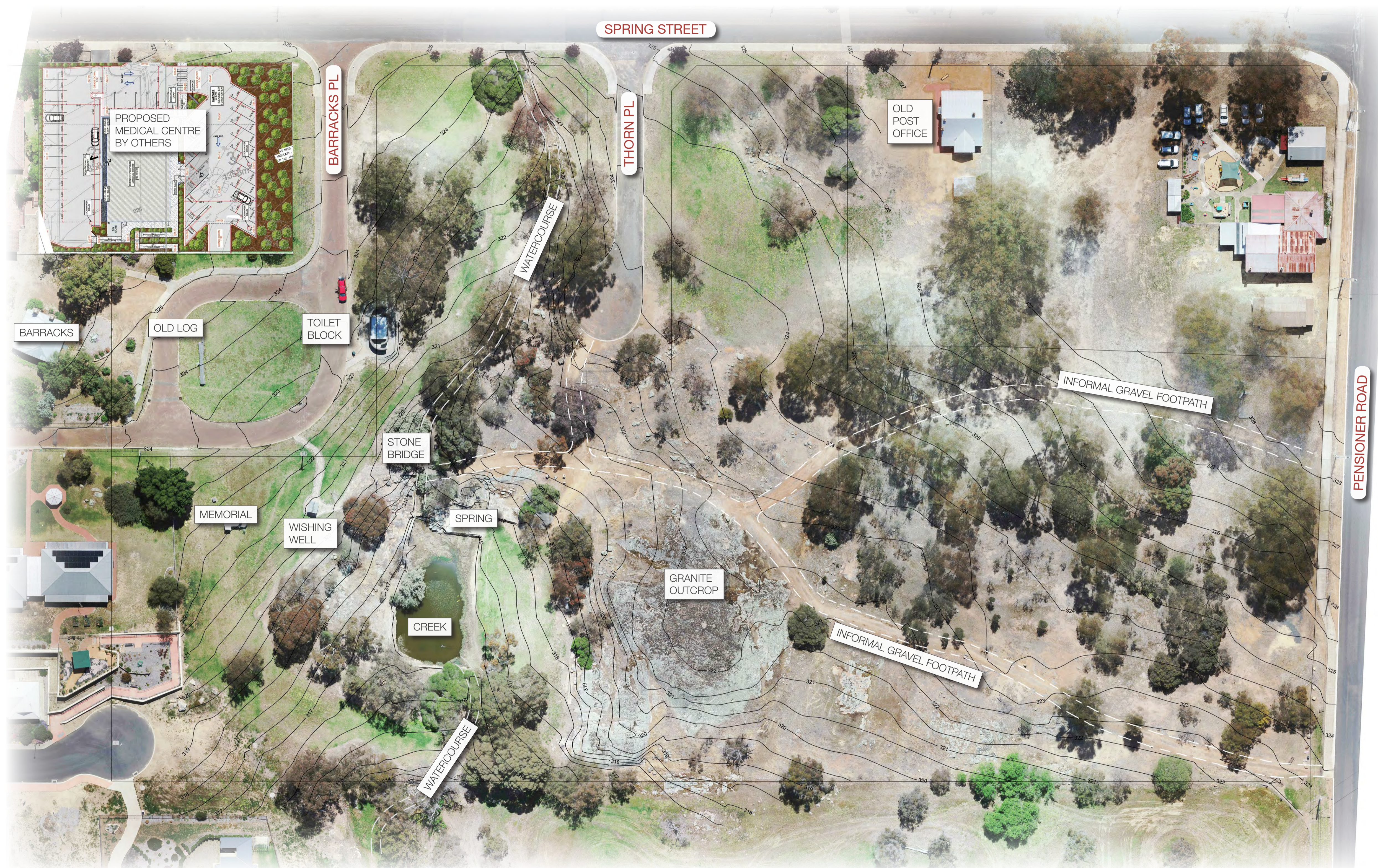


The Spring, Kojonup

Landscape Concept
January 2021

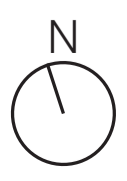






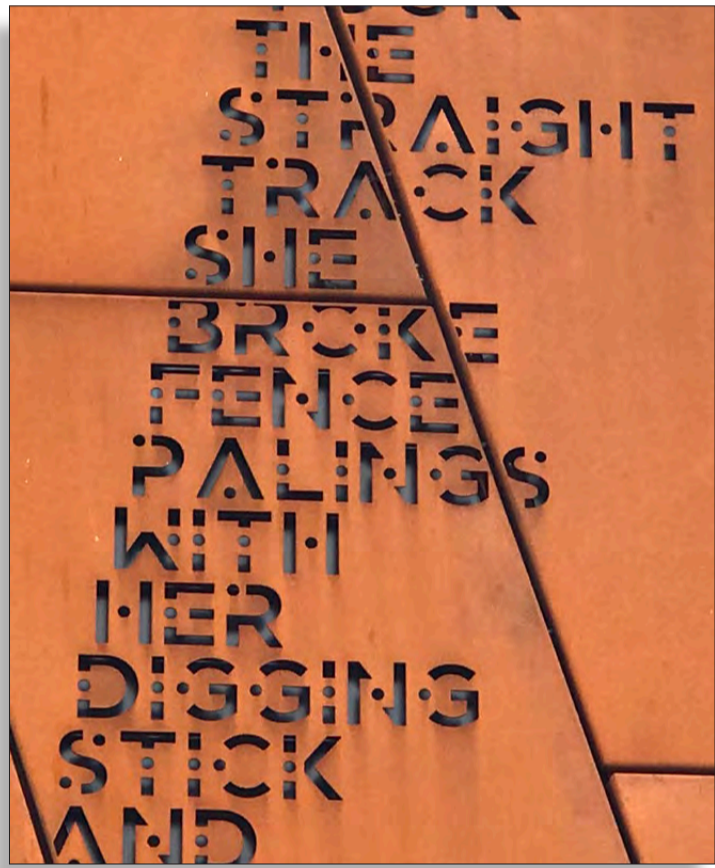
- ### KEY FEATURES
- A** NATURE PLAYGROUND & WATER PLAY
 - B** EXISTING TOILET BLOCK (UPGRADED WITH ACCESSIBLE TOILETS AND NEW RETAINING & SCREENS)
 - C** IRRIGATED LAWN
 - D** EXISTING LOG (NEW PATH FOR ACCESS)
 - E** NATIVE TREES (PLANTED IN RANDOM PATTERN)
 - F** RELOCATED MEMORIAL
 - G** EXISTING WISHING WELL (NEW PATH FOR ACCESS)
 - H** EXISTING NATURAL SPRING (NEW VIEWING PLATFORMS AND INTERACTIVE SIGNAGE)
 - I** EXISTING CREEK (NEW RANDOM ROCKWORK AND NATIVE PLANTING TO CREEKLINE)
 - J** 6 SEASONS LANDSCAPE
 - K** ROCKY OUTCROPS (EXPLORING & INFORMAL VIEWING PLATFORMS)
 - L** THE WAGYL FOOTPATH AND BRIDGE MEANDERS DOWN SPRING STREET CONNECTING TO KOJONUP BROOK AND KODJA PLACE
 - M** THORN PLACE IS A PROPOSED MAINTENANCE AND EMERGENCY ACCESS TRACK
 - N** INTERPRETIVE TOTEMS IN SPECIFIC SEATING NODES. NATIVE SPECIES REHABILITATE SOME OF THE AREA

- ### KEY FEATURES
- #### PATHS + PLATFORMS
- O** WALKWAY (ACCESSIBLE)
 - P** CRUSHED GRAVEL ACCESS PATHS
 - Q** CONCRETE ACCESS PATH
 - R** RAISED VIEWING PLATFORM – DECKING
 - S** VIEWING PLATFORM
 - T** EXISTING BRIDGE WIDENED (UPGRADED ACCESSIBILITY)
 - U** NEW BRIDGE
 - V** DECKING AND INTERPRETIVE SIGNAGE (DISCOURAGING ACCESS TO GRANITE OUTCROP)
- #### PARKING UPGRADES
- 1** EXISTING ROAD NETWORK TO REMAIN
 - 2** 90° PARKING
 - 3** ACCESSIBLE PARKING BAYS
 - 4** BUS BAY
 - 5** DRIVE THROUGH CARAVAN PARKING AREA
 - 6** ACCESSIBLE CROSSWALK
 - 7** ACCESSIBLE PATHWAYS FROM PARKING TO SITE
 - 8** CROSSOVER FROM MEDICAL CENTRE





5 TOILET TO SCREEN CONNECTION - EXAMPLE IMAGE LOOKING UP TO CORTEN CONNECTIONS



3 INTERPRETIVE SIGN FOCUSING ON SPECIFIC INDIGENOUS HISTORY



2 NATURE PLAY WITH ROCK AND TIMBER ELEMENTS



2 NATURE PLAY BRIDGE OVER DRY / SEASONAL RIVER BED



1 RAISED PLATFORM WITH SAFETY RAILING (BALUSTRADE) WHERE NECESSARY



2 NATURE PLAYFUL ELEMENTS MIX OF TIMBER AND STONE



4 CURVED RETAINING NEAR TOILET BLOCK



5 SHELTER WITH INTERPRETATION AND SEATING



3 CURVED RETAINING WITH PLANTING



6 CURVED RETAINING WITH SEATING



1 ALL ACCESSIBLE PLATFORM WITH SAFETY BALUSTRADE AS REQUIRED



3 CORTEN STEEL EDGES



4 INTERPRETIVE SIGNAGE EXAMPLE SKETCH



2 SEATING NODE



2 INTERPRETIVE SIGN



1 RAISED PLATFORM WITH SAFETY RAILING (BALUSTRADE) WHERE NECESSARY



4 PATHWAY THROUGH NATIVE PLANTING



3 BRIDGE TREATMENT WITH SUGGESTED NEW BALUSTRADE AND SURFACE MATERIAL



7 WALKWAY PROTECTING THE ENVIRONMENT, CONNECTING SHELTERS, SEATING AND INDIGENOUS FEATURES



6 6 SEASONS LANDSCAPE INSPIRATION



5 SHELTER, INTERPRETATION & SEATING



1 SEATING NODE WITH INTERPRETIVE SIGNAGE



2 CREEK EDGE FORMING A MORE NATURAL EDGE WITH ROCKS AND PLANTING



3 ROCKY EDGE TO WATER COURSE AND CREEK



6 6 SEASONS LANDSCAPE - A JOURNEY AND LEARNING EXPERIENCE



1 SEATING NODE



1 SEATING NODE



4 PATHWAY THROUGH 6 SEASONS JOURNEY

GRANITE OUTCROP



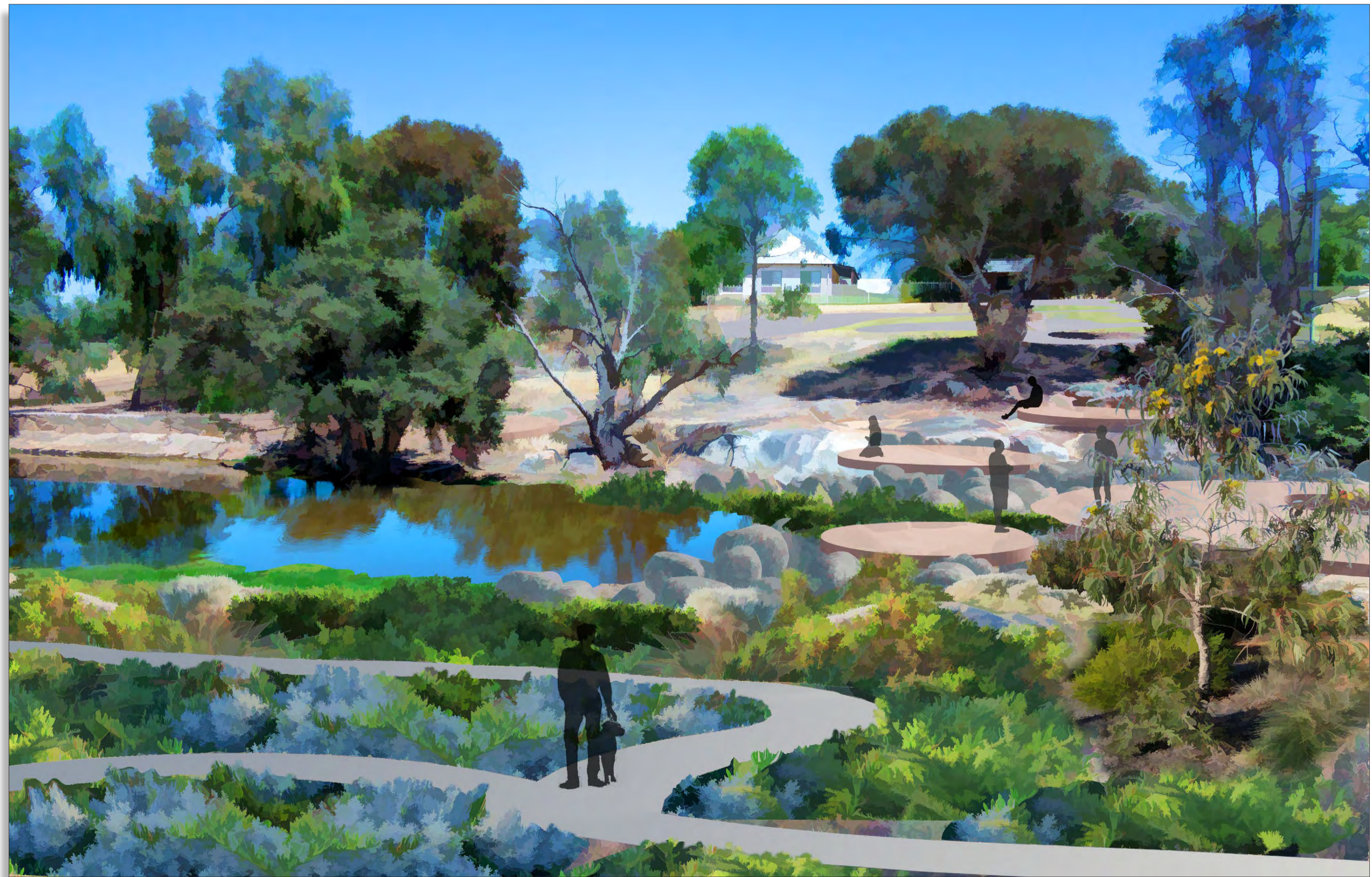
VIEWING PLATFORMS
HOVERING OVER ROCK OUTCROPS



4 PATHWAY THROUGH 6 SEASONS NATIVE PLANTING



VIEW EAST ACROSS THE SPRING

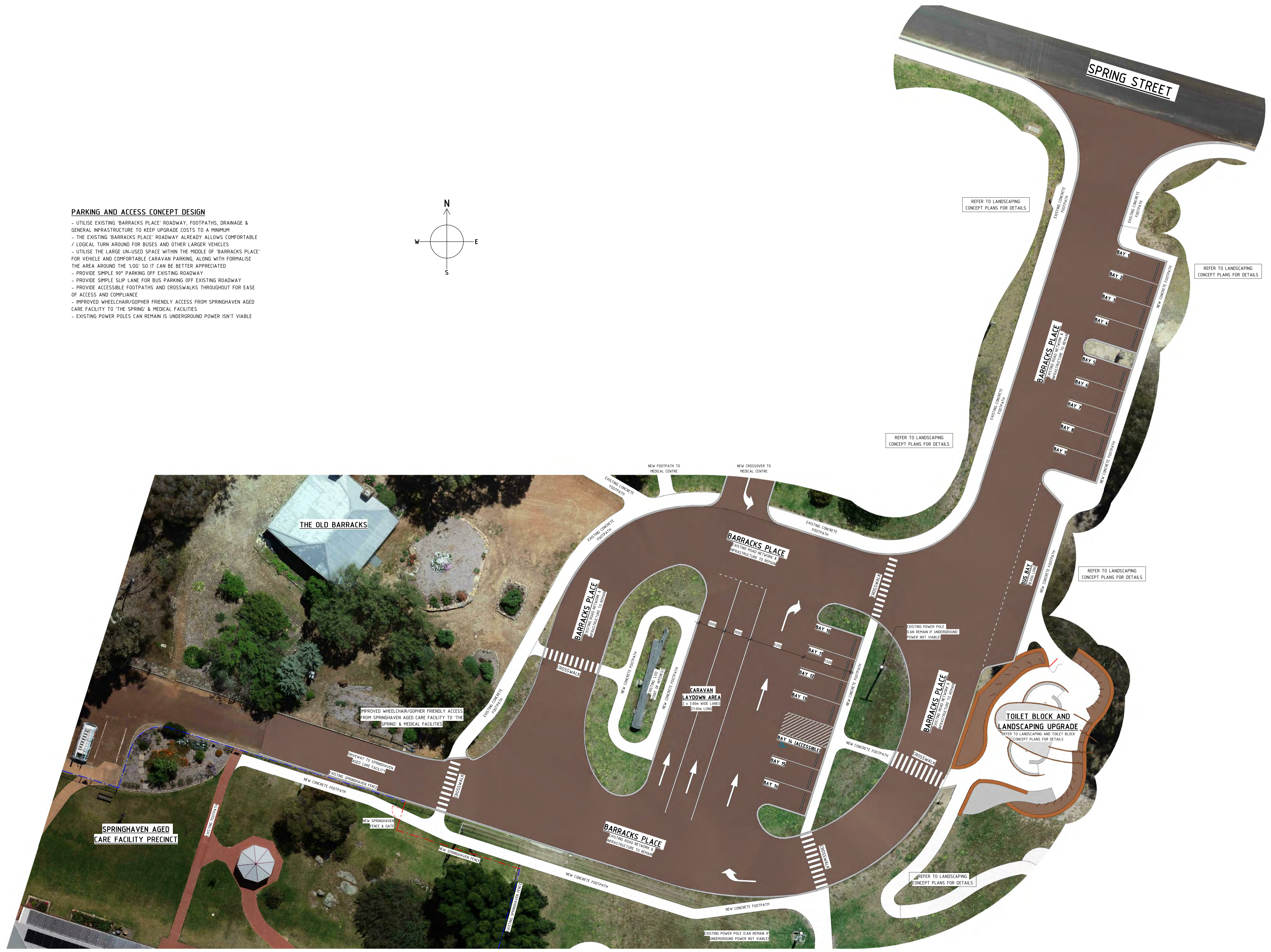
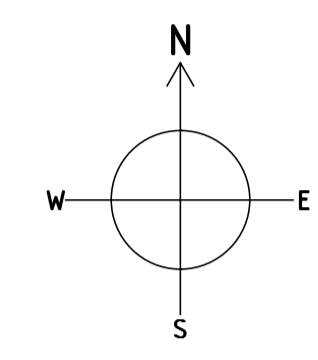


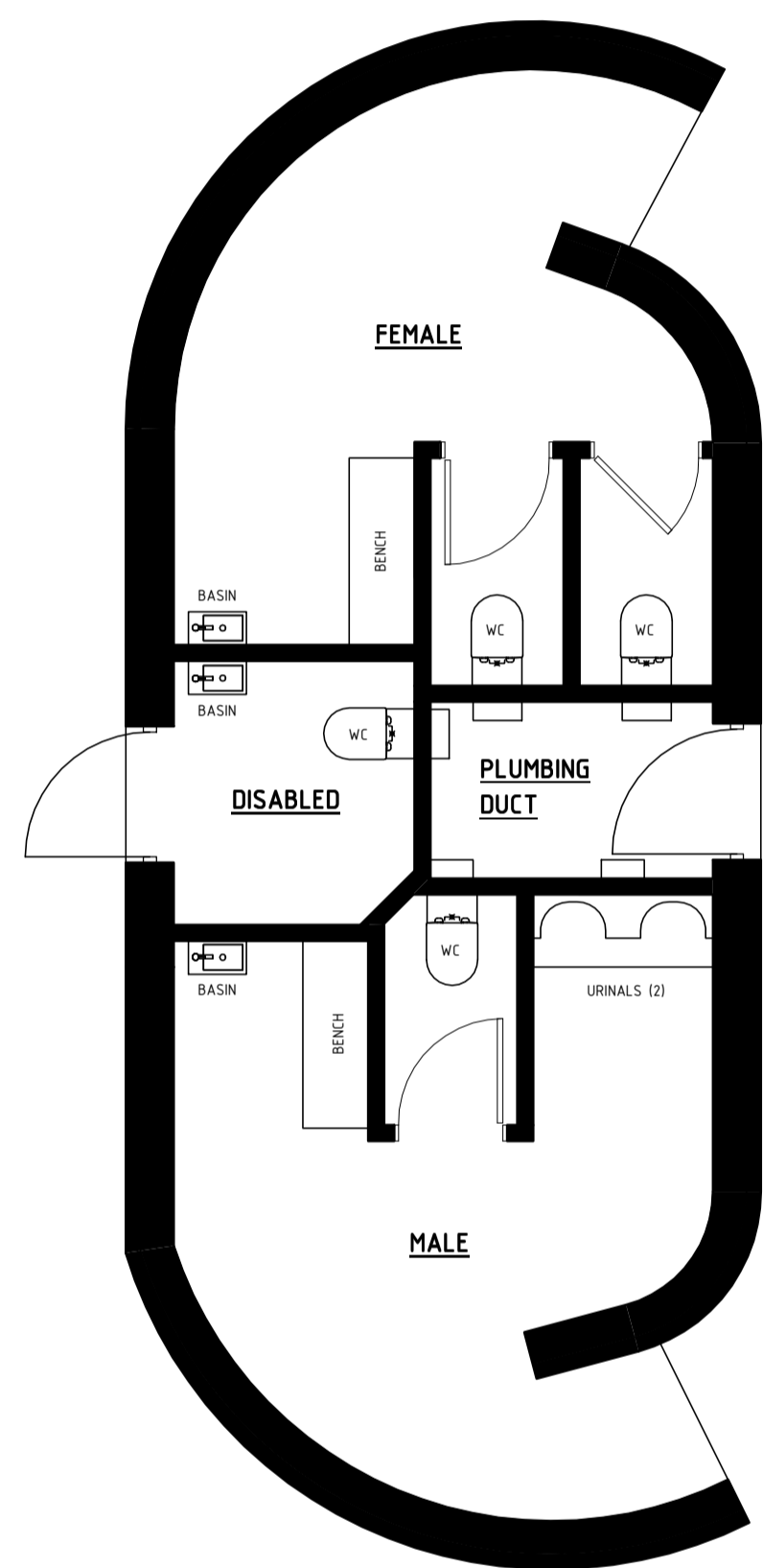
VIEW WEST ACROSS THE SPRING



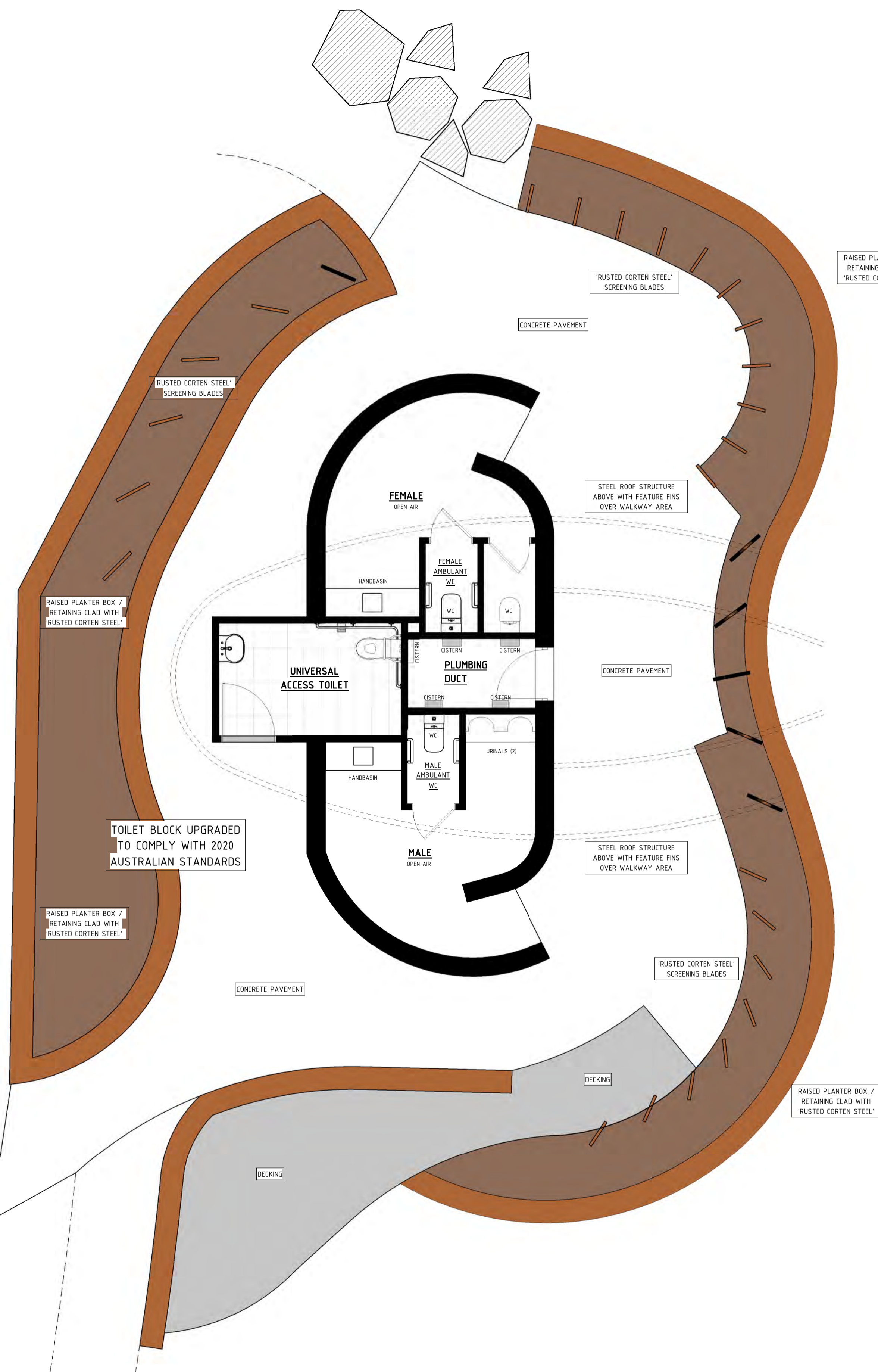
PARKING AND ACCESS CONCEPT DESIGN

- UTILISE EXISTING 'BARRACKS PLACE' ROADWAY, FOOTPATHS, DRAINAGE & GENERAL INFRASTRUCTURE TO KEEP UPGRADE COSTS TO A MINIMUM
- THE EXISTING 'BARRACKS PLACE' ROADWAY ALREADY ALLOWS FOR COMFORTABLE / LOGICAL TURN AROUND FOR BUSES AND OTHER LARGER VEHICLES
- UTILISE THE LARGE UN-USED SPACE WITHIN THE MIDDLE OF 'BARRACKS PLACE' FOR VEHICLE AND COMFORTABLE CARAVAN PARKING, ALONG WITH FORMALISE THE AREA AROUND THE 'LOG' SO IT CAN BE BETTER APPRECIATED
- PROVIDE SIMPLE 90° PARKING OFF EXISTING ROADWAY
- PROVIDE SIMPLE SLIP LANE FOR BUS PARKING OFF EXISTING ROADWAY
- PROVIDE ACCESSIBLE FOOTPATHS AND CROSSWALKS THROUGHOUT FOR EASE OF ACCESS AND COMPLIANCE
- IMPROVED WHEELCHAIR/GOPHER FRIENDLY ACCESS FROM SPRINGHAVEN AGED CARE FACILITY TO 'THE SPRING' & MEDICAL FACILITIES
- EXISTING POWER POLES CAN REMAIN IS UNDERGROUND POWER ISN'T VIABLE





1 EXISTING TOILET BLOCK
1 : 50



2 PROPOSED TOILET BLOCK
1 : 50

